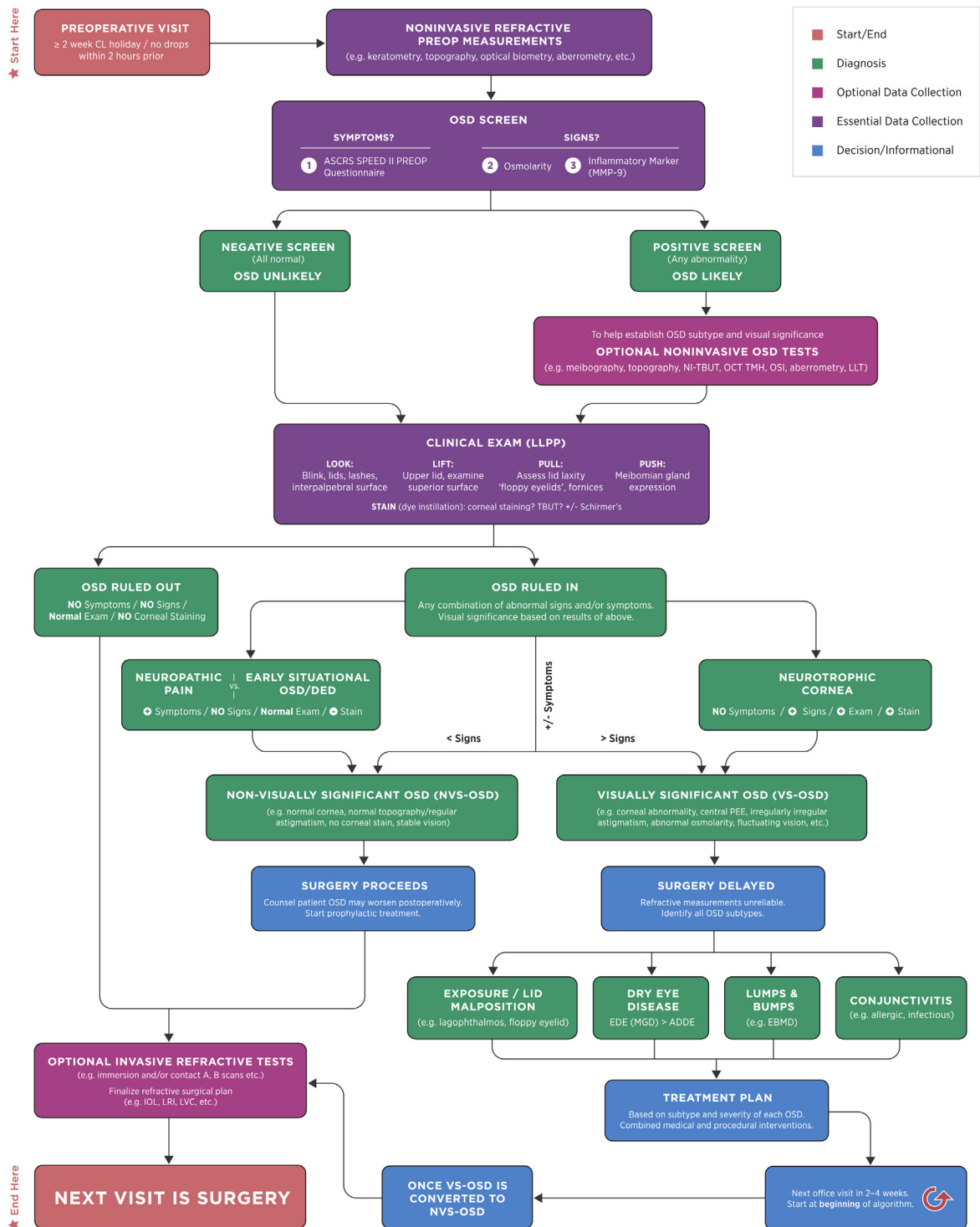


ASCRS PREOPERATIVE OSD ALGORITHM



©ASCRS 2019



Figure 1. The ASCRS preoperative OSD algorithm (ADDE = aqueous-deficient dry eye; CL = contact lens; DED = dry-eye disease; EBMD = epithelial basement membrane dystrophy; EDE = evaporative dry eye; IOL = intraocular lens; LLPP = Look, Lift, Pull, Push; LLT = lipid layer thickness; LRI = limbal relaxing incisions; LVC = laser vision correction; MGD = meibomian gland dysfunction; MMP-9 = matrix metalloproteinase-9; NI-TBUT = noninvasive tear breakup time; NVS-OSD = nonvisually significant ocular surface disease; OCT = optical coherence tomography; OSD = ocular surface disease; OSI = ocular scatter index; SPEED = Standard Patient Evaluation of Eye Dryness; TBUT = tear breakup time; TMH = tear meniscus height; VS-OSD = visually significant ocular surface disease).